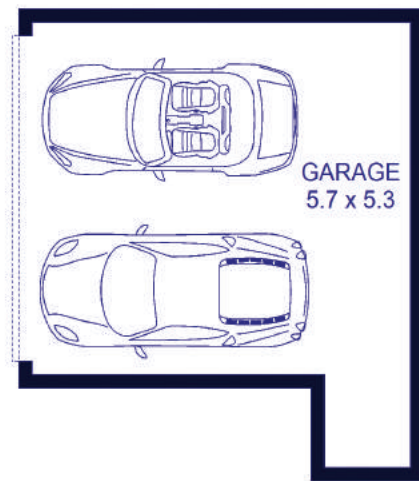
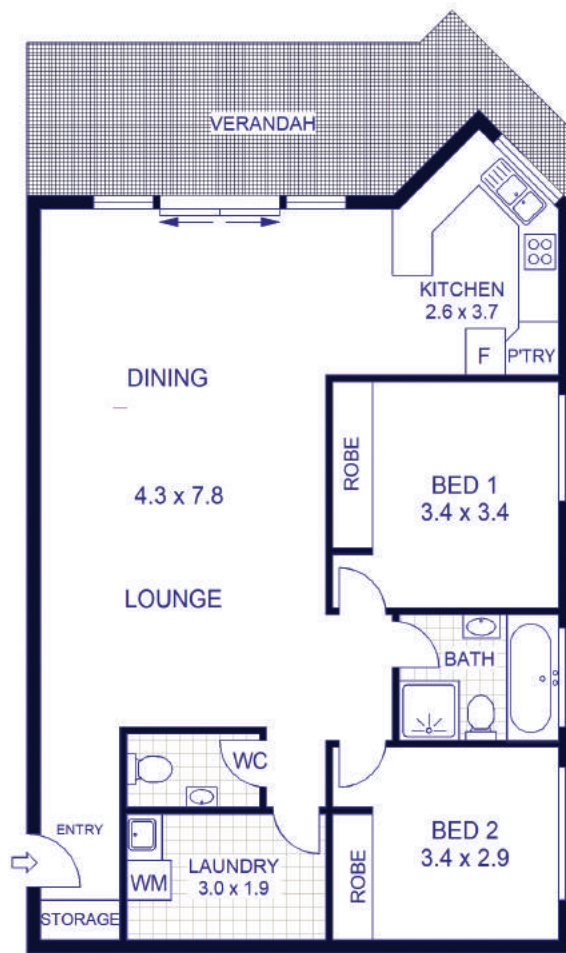


6-2cliostreet.com.au

Sutherland

2 🛏 1 🍽 2 🚗





We believe the information in this document to be reliable, however interested persons should make their own enquiries. Dimensions are approximate.

6/2 Clío Street Sutherland

- Perfectly positioned mid-floor apartment with a north-east aspect in prime location
- Well maintained in the sought after "Brielle" security complex
- Interiors bathed in natural sunlight throughout
- Spacious open plan living and dining spaces
- Generous bedrooms with built-in wardrobes and ceiling fans
- Beautifully appointed kitchen with gas cooktop and dishwasher
- Second w/c and oversized laundry with additional storage space
- Oversized private entertaining style balcony with pleasant district views
- Double security lock up garage with additional storage
- Located minutes to shops, schools and transport, Sutherland and Kirrawee stations

FOR SALE

| | |
|----------------|----------|
| Size | 140 sqm |
| Council | \$268 pq |
| Water | \$172 pq |
| Strata | \$674 pq |